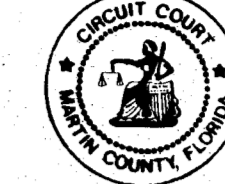


UNINCORPORATED MARTIN COUNTY
 MAP OF THE SUBDIVISION OF THE MILES OR HANSON GRANT
 P.B. 1, PG. 11
 (PALM BEACH COUNTY RECORDS)

This right of way map when recorded is an instrument of conveyance, transferring in accordance with the Florida Statutes 337.29, all right, title, and interest in the road, street, or highway shown herein, from the Florida Department of Transportation to Martin County.

Recorded in Public Records of Martin County, Florida, this 11th day of April, A.D. 2014, in Road Plat Book 17, Page 23.

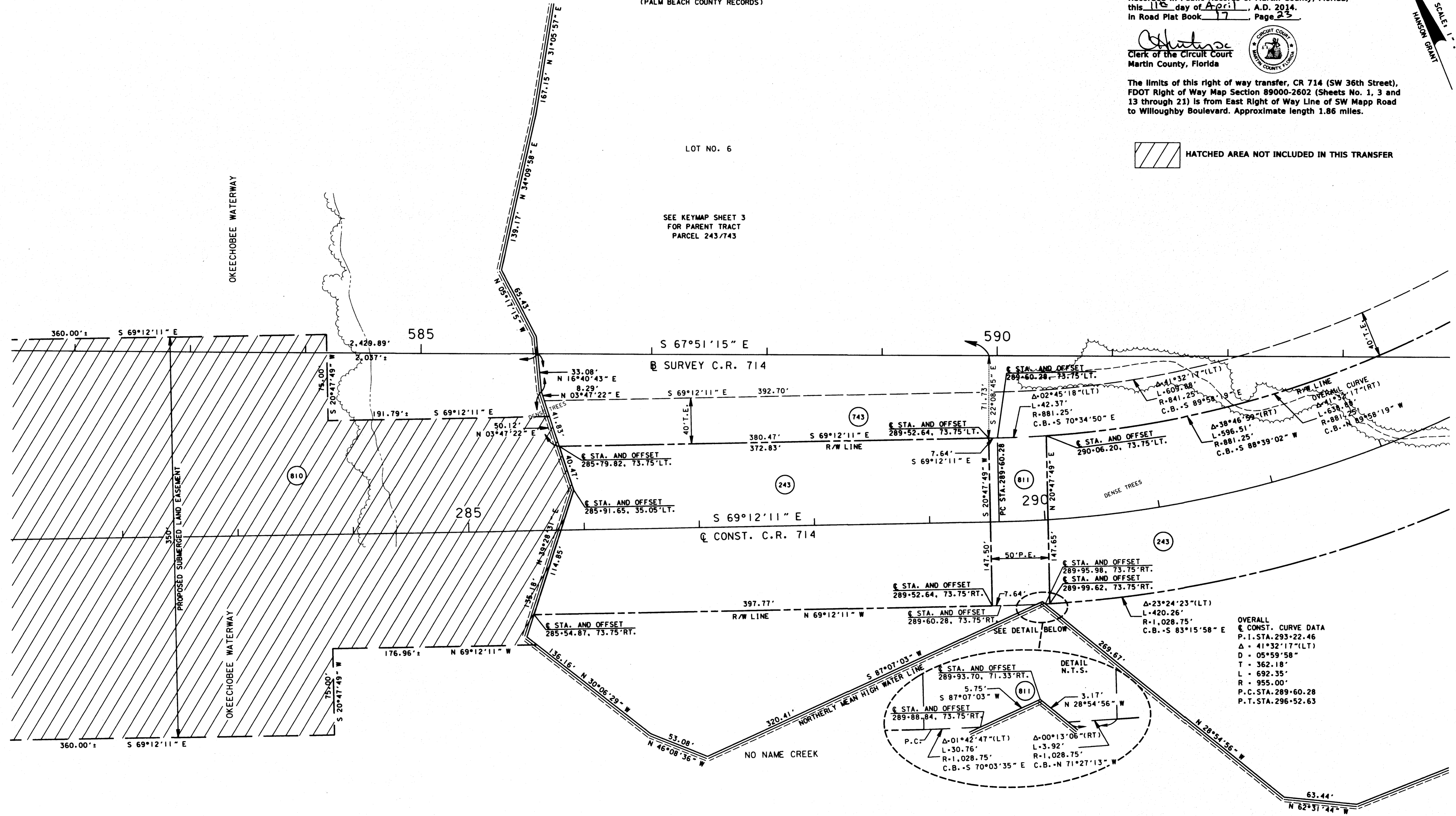
[Signature]
 Clerk of the Circuit Court
 Martin County, Florida



The limits of this right of way transfer, CR 714 (SW 36th Street), FDOT Right of Way Map Section 89000-2602 (Sheets No. 1, 3 and 13 through 21) is from East Right of Way Line of SW Mapp Road to Willoughby Boulevard. Approximate length 1.86 miles.



HATCHED AREA NOT INCLUDED IN THIS TRANSFER



OVERALL
 CONST. CURVE DATA
 P.I. STA. 293+22.46
 Δ 41°32'17" (LT)
 D = 05°59'58"
 T = 362.18'
 L = 692.35'
 R = 955.00'
 P.C. STA. 289+60.28
 P.T. STA. 296+52.63

MAP OF THE SUBDIVISION OF THE MILES OR HANSON GRANT
 P.B. 1, PG. 11
 (PALM BEACH COUNTY RECORDS)

UNINCORPORATED MARTIN COUNTY

NOT A SURVEY

SEE SHEET ONE FOR LEGEND AND GENERAL NOTES

C.R. 714 (S.W. MARTIN HWY.)
 FROM THE FLORIDA TURNPIKE TO S.E. WILLOUGHBY BLVD.

RIGHT OF WAY MAP	FLORIDA DEPARTMENT OF TRANSPORTATION RIGHT OF WAY MAPPING	APPROVED BY <i>[Signature]</i>	DATE 2/23/09	BY DATE				FED. PROJ. NO. SEE COVER SHEET	SECTION 89000-2602	MAPS PREPARED BY KEITH B. SCHNARS, P.A.	FIELD BOOK NO.'S SEE SHEET NO. 1
		DISTRICT ENGINEER OF WAY SURVEYOR		REVISION	BY	DATE	REVISION	BY	DATE	COUNTY ROAD NO. 714	MARTIN COUNTY
				PRELIM	DURYES	04-12-02	FINAL	SANCHEZ	09-30-02	ITEM/SEGMENT No. 230978.1	SHEET 18 OF 26

\\flm\mapp\mg\2309781\rvd\et118.dgn